

FOREX inCONTROL REBORN USER MANUAL

Installation step by step:

1) Run your MetaTrader 4 terminal. Open its data folder as it is shown on the next screenshot:

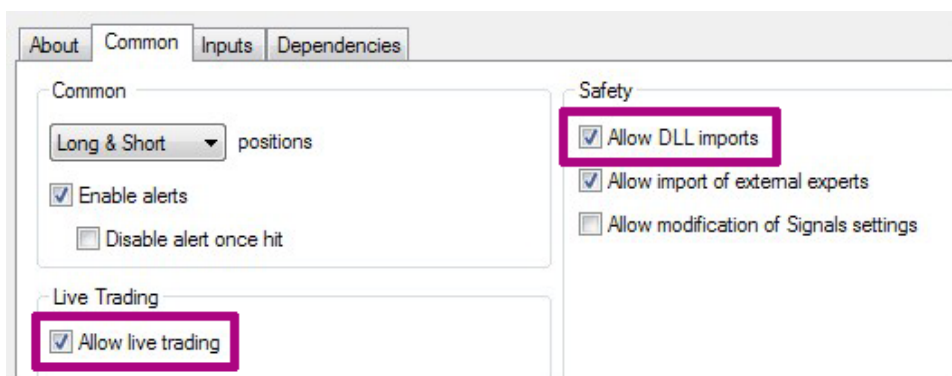
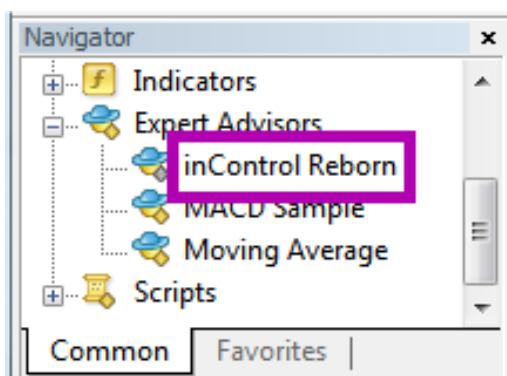
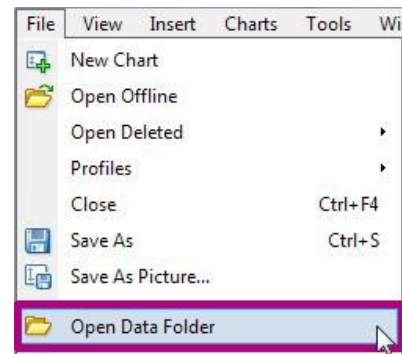
2) Copy the files of the EA to the next folders:

inControl Reborn.ex4 to MT4 terminal>File>Open Data Folder>MQL4>**Experts**

ForexStore.dll to MetaTrader4 terminal>File>Open Data Folder>MQL4>**Libraries**

3) Restart your MetaTrader 4.

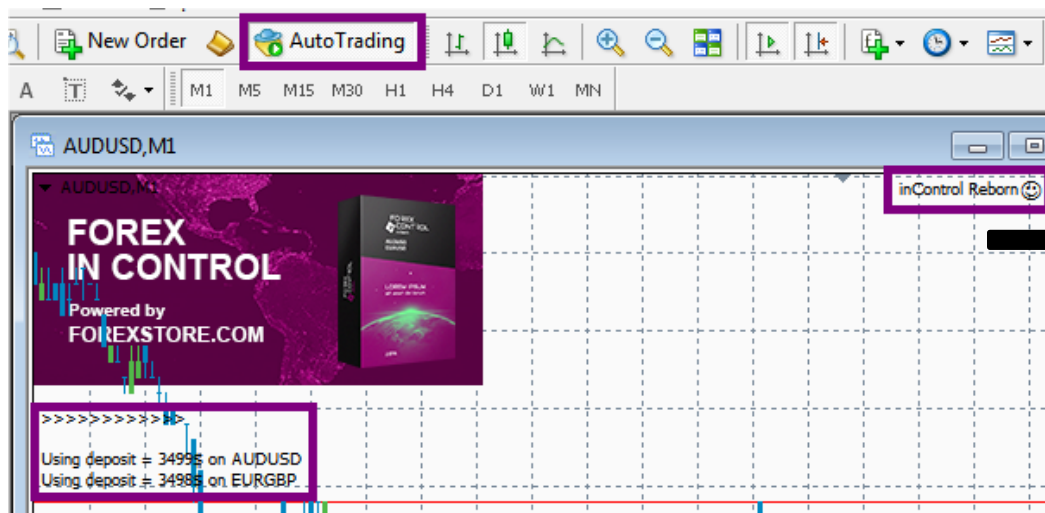
4) You should see Forex inControl Reborn in the "Navigator" window. Click it twice or drag and drop it to AUDUSD chart with any time frame. Please notice, you do not need to attach the EA on two charts. Forex inControl Reborn will trade on all the supported currency pairs, if you attach the EA to one chart only.



5) Check the boxes in a tab "Common" as it is shown above.

6) In the tab "Inputs" you can enter your settings or use the default recommended. More information about all the settings you can find below.

7) Now we can check if Forex inControl Reborn works correctly. The button "AutoTrading" should be turned on, and a "smiley face" near the name of the EA should smile. The risk settings for each currency pair should be displayed in the upper left corner of the chart:



You need to know:

- To reach stable results, the EA should work 24/7. Especially it is necessary when there are opened trades, because the EA analyzes the Market all the time and can open additional trades.
- Sometimes Forex inControl Reborn doesn't open new orders for a few days. So don't worry if the EA doesn't start trading right after the installation. The EA makes calculations and finds the best moment for entering the Market. Sometimes it may take a couple of days.
- The EA works properly with 4-digit and 5-digit quotes. It makes switching automatically. All the changes you make in the settings of the EA should be based on 4-digit quotes.
- We do not recommend to use a cracked version of Forex inControl Reborn even on informational purposes, because we developed complex and unique security algorithms which will be extremely hard to crack. Any hacked version of our EA will not work properly, and may cause a loss of your deposit.

Forex inControl Reborn works on 2 currency pairs:

AUDUSD

Min Deposit: \$450 for 0.01 lot
Time Frame: Any

EURGBP

Min Deposit: \$320 for 0.01 lot
Time Frame: Any

It is a rare situation when the EA has a drawdown on different currency pairs at the same time. So higher Min Deposit will be enough for trading on all the currency pairs.

Please notice, the specified values of Min Deposit mean risking by all of the deposit!

Our recommendations:

We recommend to use accounts with leverage from 1:200 (and more) and trade with 35% of the deposit on each currency pair. In order to trade with 35% of the balance, your deposit has to be bigger than Min Deposit. To calculate exactly how much money you need, use the following formula:

$\text{MinDeposit} / 35 \times 100 = \text{Your required deposit}$

For AUDUSD:

$450 / 35 \times 100 = \$1286$

For EURGBP:

$320 / 35 \times 100 = \$915$

In case of using the "Accelerator" mode, we recommend to trade with 20% of your deposit.

The description of the parameters:

AutoLot – Turning on and off of an automatic lot calculation. The calculation is based on a size of deposit in MaxDrawDown. If "false", the EA will set lot from ManualLot.

MaxDrawDown – It is a percentage of deposit, which the EA will use for trading. It works only if AutoLot is turned on. If AutoLot is turned off, MaxDrawDown will be selected automatically based on ManualLot.

ManualLot – Here you can manually set lot size. It works only if AutoLot is turned off. If you set lot manually, MaxDrawDown will be selected automatically based on your lot.

Slippage – Maximum of the price slippage for buying or selling orders.

CloseAll – If “true”, the EA will immediately close all its opened trades. After that you need to disable the option, so that Forex inControl Reborn could open a first trade again.

StopDate – The date when you want the EA to stop trading. You should use this option if you want to stop the work of the EA before big news. Notice, the EA will stop its work after the last trade in the strategy.

Accelerator – This mode allows to get much bigger profit with the same risks during flat periods in the Market. It temporarily multiplies lot sizes to increase profit. If the value of this option is “Auto” the EA will use periods and multiplier of lot sizes chosen by us. If the value of this option is “On” you can specify periods and desired multiplier in the next StartDay, EndDay, AccelerationFactor options. Notice, the value “On” is for advanced traders only. You should not choose it if you are not sure how to use it. If the value of this option is “Off” the EA will not use the option at all.

StartDay1 – First day of a flat period number 1 during the current month.

EndDay1 – Last day of a flat period number 1 during the current month.

StartDay2 – First day of a flat period number 2 during the current month.

EndDay2 – First day of a flat period number 2 during the current month.

AccelerationFactor – Multiplier of lot sizes during the specified flat periods in the Market. In case of using Accelerator mode the EA multiplies lot size by the value of this option.

Trade on AUDUSD/EURGBP – Turning on and off the trading on a corresponding currency pair.

Hedge – Turning on and off trading in opposite direction to other your trades. You need to disable this option if your broker doesn't allow hedging.

Let us know if you need help: support@forex-incontrol.com